

Stitch N Shape Holiday Bowl Project

Created
By
Martie Sandell, Floriani National Educator

Welcome to the Holiday World of Floriani!

General Instructions-Stitch N Shape Double-Sided Fusible is used with the project included here. Fabric is fused to both sides of the project before cutting the pattern shapes. Walt's Press Cloth will ensure an even fusing when using all Floriani Fusible Stabilizers. The luster of Floriani Polyester 40wt Threads is amazing. Color 562 (Walnut Taffy) will stitch with the "look" of metallic gold and was used on many of the samples pictured here. You can download a 40wt Thread Conversion Chart to match colors noted in the designs.



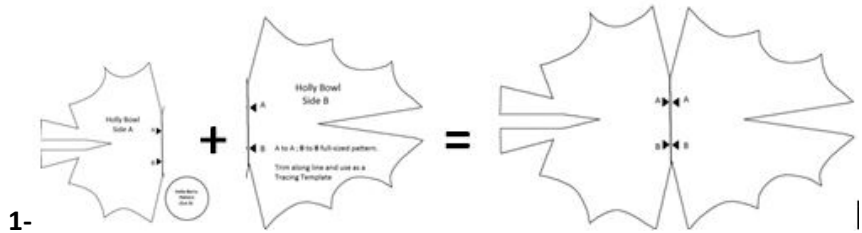


Gather Your Supplies-

- [Stitch N Shape Double-Sided Fusible](#) , cut 12"x 17"
- [Wet N Gone Tacky](#)
- [Template Tearaway](#)
- [Wet N Gone Tacky Tape](#), 1" wide
- [Walt's Press Cloth](#)
- [Walt's Tool Kit](#)

- 1/3 Yd. Green Fabric
- Matching Floriani 60wt Thread (wind matching bobbin)
- 1/3 Yd. Fabric Print for Lining
- Scrap of Red Fabric for the Holly Berries
- Stuffing
- 1 Yd. Optional Ribbon for Bow
- Painter's Sponge Brush
- Glue Gun or Craft Fabric Glue

1. Print both Holly Pattern sections onto the fabric side of Template Tearaway Sheets.
2. Pull the paper back to allow the tacky surface to adhere to the adjacent matching piece.
3. Cut it out as a "Tracing Template".
4. Fuse fabric to both sides of the Stitch N Shape Fusible.
5. Use the Template to trace shape onto the fabric. Cut out the shape.



Embroidery-

By Sewing Machine-

1. Wind a Bobbin with Floriani 40wt Thread to match Fabric.
2. Stipple the inside if desired.
3. Attach your Applique Foot. Use the following settings for Satin Stitch edging:
 - Tension – 4.0 or "balanced" so top and bottom look similar on your machine
 - 3.5mm Width
 - .38mm Stitch Length
 - Satin Stitch (zigzag width of 3.5mm with a stitch length of .38mm) the outer edges, leaving the darts unstitched.

By Multi-Needle Machine-

(embroidery file provided for Hoop 14"x 7-7/8")

1. Hoop Wet N Gone Tacky with the paper side up. Score the top and pull back release paper to reveal tacky surface.
2. Color-match Fabric to Floriani 40wt Thread. Thread machine and bobbin.



3-

5-

3. Once Placement Lines are stitched, position the Holly Shape in place.
4. Surface will be stippled and the outer edge finished with a Satin Stitch.
5. Use a dampened sponge brush around the outer edge of the Holly to release the shape from the hooped stabilizer.
6. Gently "scrub" away the Wet N Gone Tacky. Blot with a towel and dry flat.

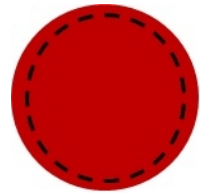
Construction-

Use Zigzag Stitch (width 4.0mm, stitch length 1.5mm) to hold each of the 4 dart edges together. *Tip- it is easiest to begin stitching at the tip and use both hands to butt the open edges together, stitching through the satin stitching on the edge. Back stitch or tie-off.*



Holly Berries-

1. Cut 3 Red Circles from the pattern piece on the Template Sheet.
2. With needle and thread hand sew a running stitch around the outer edge.
3. Place a "ball" of stuffing in the center and draw up on the thread. Close the circle and fasten off the thread.



Completing and Shaping the Bowl-

1. Steam or dampen the bowl to "shape" the tip of the bowl.
2. Tie a ribbon around the stem, if desired.
3. Use Craft Glue or a Glue Gun to attach the Berries over the ribbon.

Dish Up Some Wrapped Candy Treats Of Fill With Special Greetings For The Season.



Happy Holiday Stitching from Floriani!